

RCC CAREER PATHWAYS Human Services: Alcohol and Drug Counselor

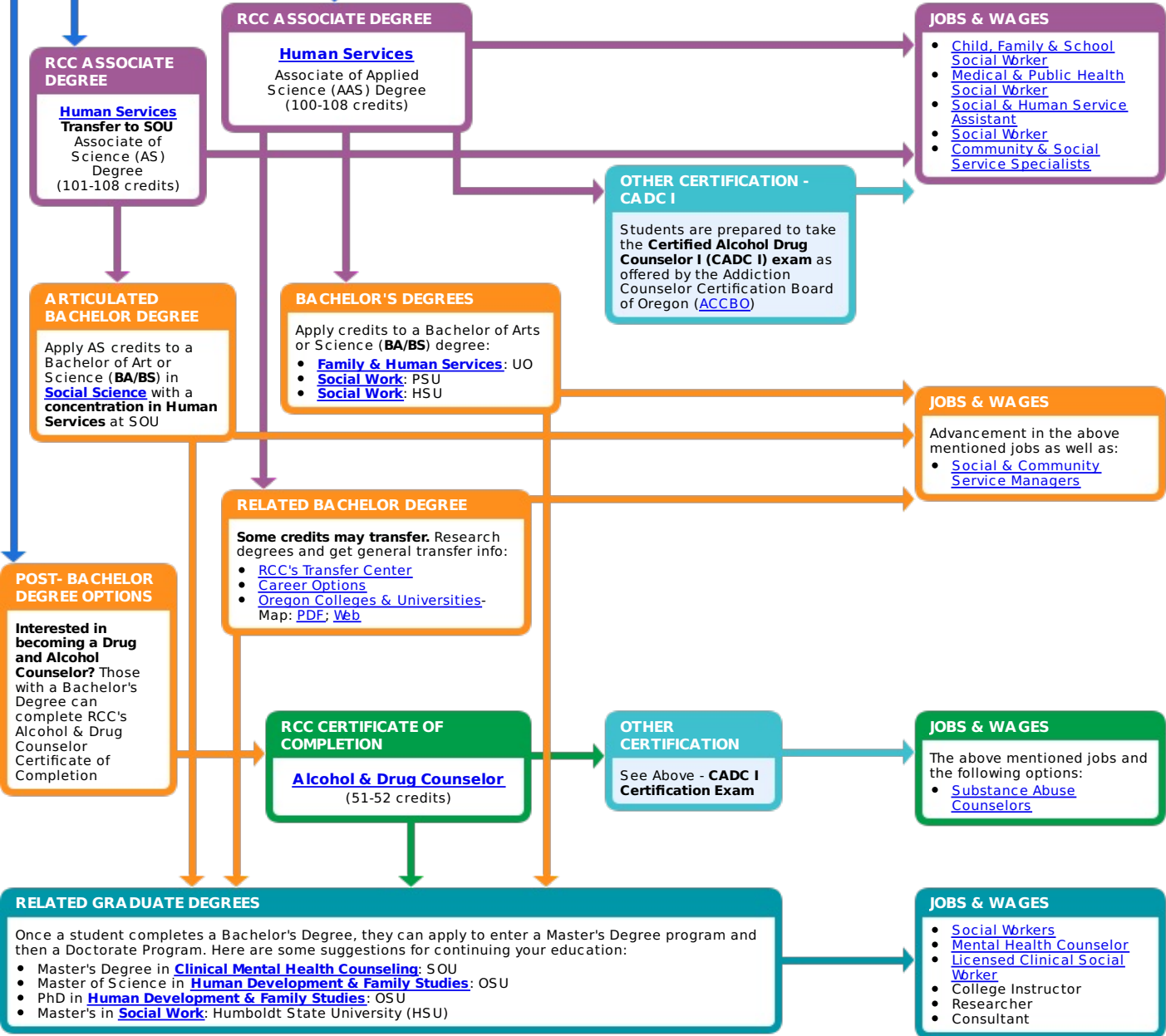
Oregon Skill Set: Human Resources



Track completed courses through **myROGUE**'s degree audit system

FOR MORE INFORMATION
 Contact the **Human Services** Department:
 • **Main office:** 541-245-7504
humanservices@roquecc.edu
 • **Oregon Telecom Service:** 7-1-1

GETTING STARTED
[Start Now](#) [High School to College Planner](#) [About this Career](#) [Learning Outcomes](#) [College NOW](#)
 RCC's Human Services certificates and degrees are **Limited Enrollment Programs**



PLEASE SEND COMMENTS OR CORRECTIONS TO [ROADMAP HELPDESK](#)

www.roquecc.edu Grants Pass: 541-956-7500 Medford: 541-245-7500

Last Update: 6/14/2019

Rogue Community College does not discriminate in any programs, activities, or employment practices on the basis of race, color, religion, ethnicity, use of native language, national origin, sex, sexual orientation, gender identity, marital status, disability, age, pregnancy, or any other status protected under applicable federal, state, or local laws. For further policy information and for a full list of regulatory specific contact persons visit the following webpage: www.roquecc.edu/nondiscrimination